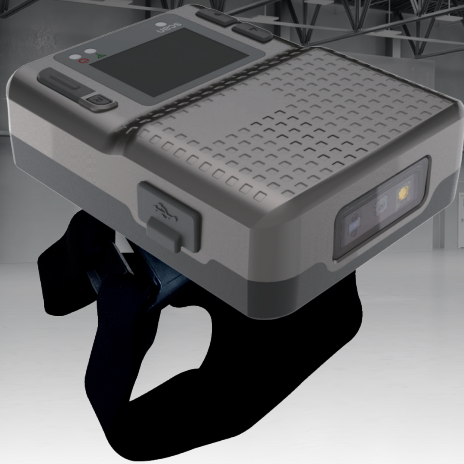


SPARROW II

Industrial Wearable Computer



- ARM7 Core
- EPC Gen2 ISO/IEC 18000-6C/6B
- 64KB RAM / 256KB ROM, Ext.8Mb
- LCD & LED Indicator
- 2D Barcode Imager(1D/2D)
- Bluetooth



Lightweight



BT 4.1



Barcode



Easy Scan



360° rotate

SPECIFICATION

PERFORMANCE SPECIFICATIONS

CPU	ARM7 Core
Memory	64KB RAM / 256KB ROM, Ext.8Mb

PHYSICAL SPECIFICATIONS

Dimension	50 x 115 x 35 mm
Weight	160g (with battery & UHF Option)
Display	LCD & LED Indicator
Power	2,200mAh Lithium-Ion battery (Rechargeable) Input AC100V ~ 240V / Output DC 5V 2A Power Adapter
Standard I/O Port	Bluetooth, USB Client
Audio	Buzzer

WIRELESS COMMUNICATION

Bluetooth	Bluetooth Class 4.1 Classic (HID / SPP), BLE (Option)
------------------	--

DATA CAPTURE

Barcode Scan	1D or 2D Barcode Scanner
UHF Frequency	CE 865MHz ~ 868MHz FCC 902MHz ~ 928MHz
Read Range	0M ~ 1M (According to Tag & Environment)
Write Range	0M ~ 0.5M (According to Tag & Environment)
RF output	26dBm (MAX)
Protocol	EPC Gen2, ISO / IEC 18000 - 6C
Special function	Anti - Collision
RFID (HF 13.56MHz) (Option)	Applied RFID Tag : ISO15693, MIFARE, ISO14443 A / B Reading range : 0Cm ~ 5Cm (According to Tag & Environment)

USER ENVIRONMENT

Operating temp.	-10°C to 45°C
Storage temp.	-30°C to 70°C
Humidity	0% to 95% relative humidity (non-condensing)
Drop	1.2M Drop to steel
Sealing	IP65

ADDITIONAL FEATURES

Notification	LED, Buzzer, LCD, Vibrator
---------------------	----------------------------

ACCESSORIES

Sync Cable

* Product specifications and design are subject to change without notice.
(Product Development In Process)

ACCESSORIES



Sync Cable



Alien Technology Asia – Korea
#909, 99, Digital-ro 9-gill Gumcheon-gu Seoul, 08510 Korea
Tel: +82-70-7012-1317 Fax: +82-2-868-1710
www.alienasia.com support@alienasia.com